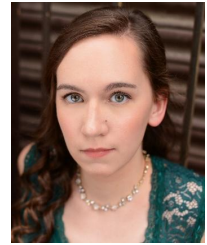


Katie Procell *Soprano*

AGMA member



Spotlight Artists Management

Spotlight.ArtistsManagement@gmail.com

katieprocellsoprano@gmail.com ~ 443-567-0990 ~ katieprocell.weebly.com

ROLES

Lily	<i>Lily</i>	Framespace Productions (film world premiere)
Giselle, Jenny, & other various roles	<i>The Elevator</i>	ENA Ensemble
Mel 2	<i>Potentialite</i>	ENA Ensemble (world premiere)
May Bookstaver	<i>May She She May</i>	Peter Dayton Music
Lisa	<i>La Sonnambula</i>	Opera Alchemy
Susanna	<i>Le nozze di Figaro</i>	Peabody Conservatory
Giulietta	<i>I Capuleti e i Montecchi</i>	Opera Alchemy
Rosina	<i>Il barbiere di Siviglia</i>	James Madison University
Valencienne	<i>The Merry Widow</i>	James Madison University
Patience	<i>Patience</i>	James Madison University
Phyllis	<i>Iolanthe</i>	Luray Opera Theatre
Despina	<i>Così fan tutte</i>	Opera Alchemy & Luray Opera Theatre

COVERS/SCENES

Susanna	<i>The Marriage of Figaro</i>	Peach State Opera
Baby Doe	<i>The Ballad of Baby Doe</i>	Opera Roanoke Apprentice Artist Program
Kryisia	<i>Out of Darkness</i>	Peabody Conservatory
Constance	<i>Dialogues des Carmélites</i>	Peabody Conservatory
Cleopatra	<i>Giulio Cesare in Egitto</i>	Halifax Opera Festival
Clorinda	<i>La Cenerentola</i>	Centre for Opera Studies in Italy
Mabel Stanley	<i>The Pirates of Penzance</i>	James Madison University

TRAINING

Education: M.M. Vocal Performance Peabody Conservatory; B.M. Vocal Performance James Madison University

Opera Roanoke Apprentice Artist Program, SongFest, Centre for Opera Studies in Italy, Oberlin Baroque Performance Institute, Halifax Opera Festival

Special skills: Intermediate Cello, basic piano, Scottish Highland dance, conversational Italian, French, German, perfect pitch